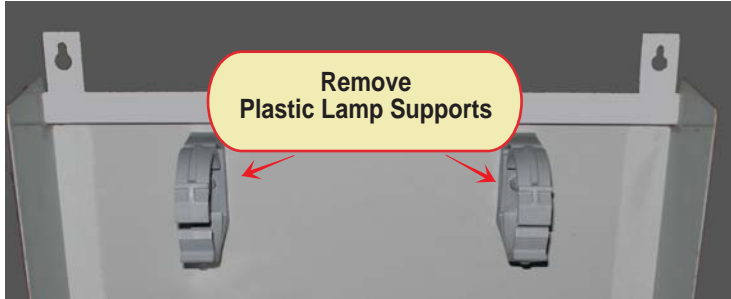


Installation Instructions Stainless Lamp Assembly Item #SLA-200

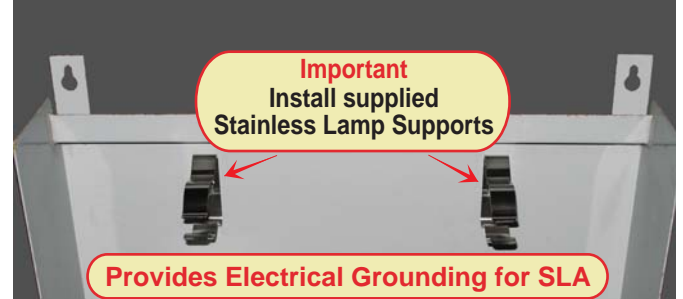
Congratulations on your purchase. Here are some pictures to help with lamp installation.
If you have any questions please call.

Note: Always disconnect power before servicing.

Step 1

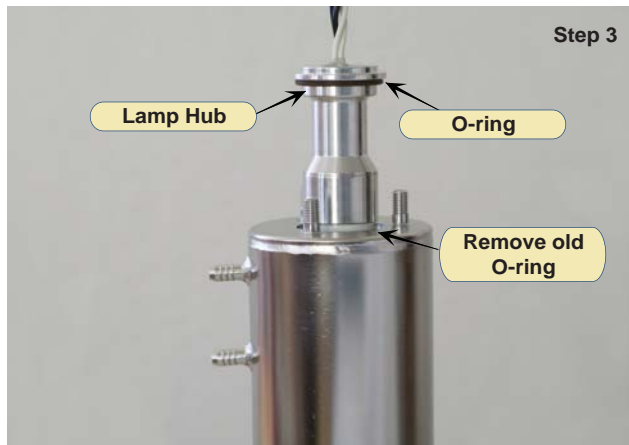


Step 2



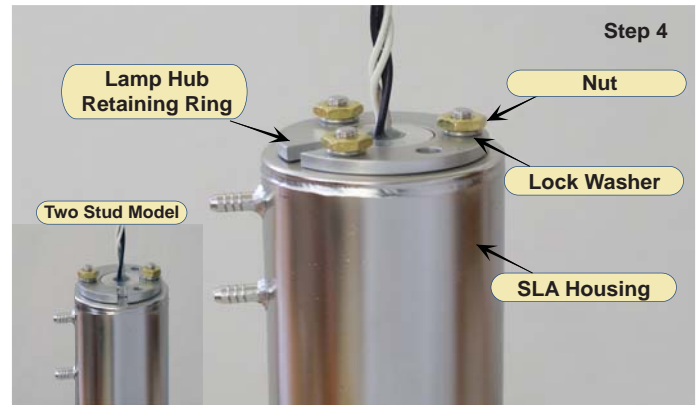
Step 3

While holding stainless housing vertical, insert lamp. Be sure o-ring is in place. Install lamp hub retaining ring.



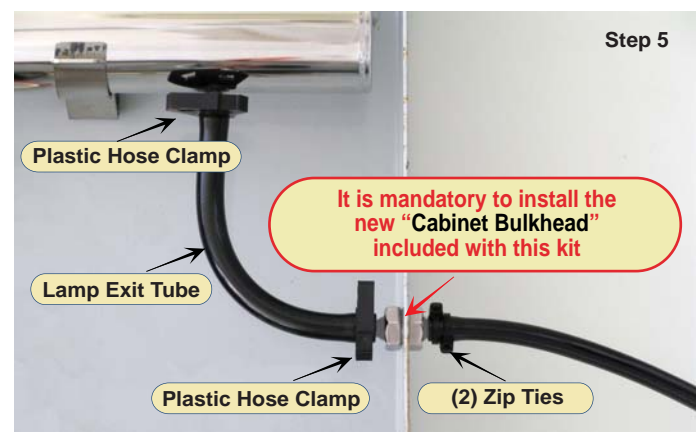
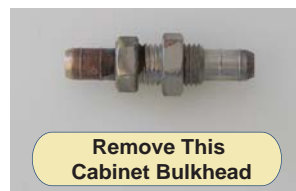
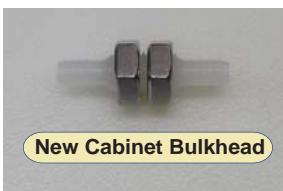
Step 4

Secure with lock washers and nuts, tighten evenly, snug to compress o-ring only (do not over tighten). Insert SLA housing into stainless lamp supports.



Step 5

Remove existing chrome plated brass cabinet bulkhead. Install new high tech plastic (corrosion/ozone proof) cabinet bulkhead included with this kit. This bulkhead is unique for the SLA installation to be successful.



Email: customerservice@revolutionozone.com

RevolutionOzone.com - P.O. Box 370, Philo, CA 95466 - Phone: 707 397 5069

Revolution Ozone is a K. Wells Manufacturing Company

All Contents and Images Copyright © 2013-2018
Page 1 of 2

S022617

Installation Instructions for SLA-200 Continue

Note: Always disconnect power before servicing.

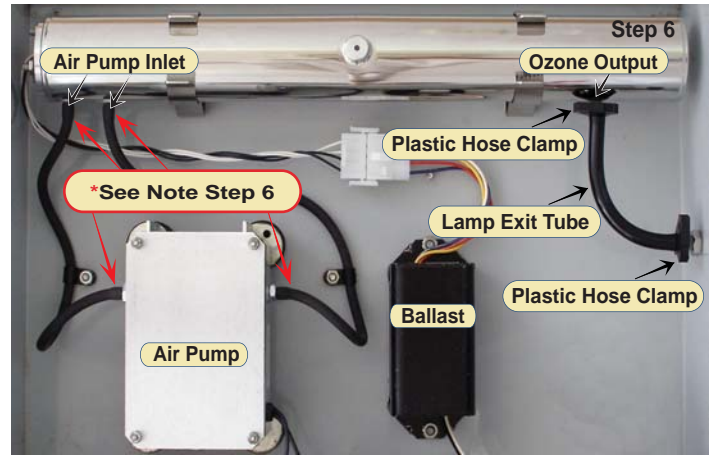
Step 6

Complete installation by connecting lamp, air pump tubing and lamp exit tubes as shown.

**Note:* Cut tubing off (1/2") every time it is disconnected from air pump or lamp housing. This step allows fresh tubing to be present and gets rid of deteriorated tubing ends which will leak.

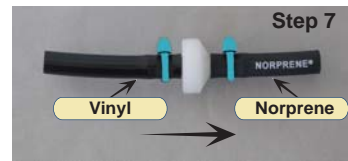
Lamp exit tubing ends may need warming with BIC lighter to facilitate assembly.

Make sure lamp wires are not in contact with any metal components, housing, lamp supports or cabinet. Keep air pump tubing from contacting cabinet, as it will cause vibration induced noise.



Step 7

Replace check valve (white), see layout illustration below. The → denotes flow direction. Always place zip ties on all 3/16" tubing connections.



Note:

Use zip ties on all 3/16" tubing connections for added security.

